

Short Form Switch Guide

NIKK
SWITCHES



NKK SWITCHES - The difference is in the switch.

Switch silhouettes shown actual size unless noted.

Toggles

Series A



PC Board

Series B **IP65**



Series B **IP65**
Illuminated



Series D2



Series G



Series G
Illuminated



EC: 0.4VA max @ 28V max
IR: 500M Ω min @ 500V DC
DS: 500V AC
OTR: -30 ~ +85°C

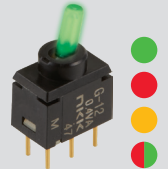
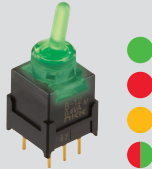
EC: 0.4VA max @ 28V max
IR: 500M Ω min @ 500V DC
DS: 500V AC
OTR: -30 ~ +85°C

EC: 0.4VA max @ 28V max
IR: 500M Ω min @ 500V DC
DS: 500V AC
OTR: -25 ~ +55°C

EC: 0.4VA max @ 48V max
IR: 1G Ω min @ 500V DC
DS: 1.0kV AC
OTR: -10 ~ +70°C

EC: 0.4VA max @ 28V max
IR: 500M Ω min @ 500V DC
DS: 500V AC
OTR: -25 ~ +85°C

EC: 0.4VA max @ 28V max
IR: 500M Ω min @ 500V DC
DS: 500V AC
OTR: -25 ~ +55°C



Series G3T **SMT**



Series M **IP68**



Waterproof Dual Seal Available

Series M2100
Illuminated



Series S **IP68**

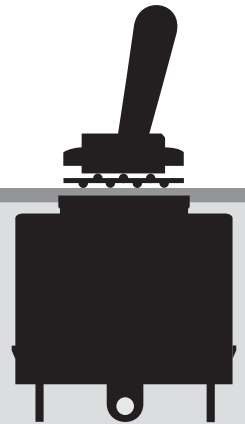


Waterproof Dual Seal Available

Series TL **IP65**
Illuminated



Series WT **IP67**



EC: 0.4VA max @ 28V max
IR: 500M Ω min @ 500V DC
DS: 500V AC
OTR: -30 ~ +85°C

EC: 0.4VA max @ 28V max
6A @ 125V AC
3 ~ 4A @ 30V DC
IR: 1G Ω min @ 500V DC
DS: 1.0kV AC
OTR: -30 ~ +85°C

EC: 0.4VA max 28V max
6A @ 125V AC
3 ~ 4A @ 30V DC
IR: 1G Ω min @ 500V DC
DS: 1.0kV AC
OTR: -10 ~ +55°C

EC: 5 ~ 30A @ 125V AC
2 ~ 30A @ 250V AC
5 ~ 30A @ 30V DC
IR: 1G Ω min @ 500V DC
DS: 2.0kV AC
OTR: -10 ~ +70°C

EC: 0.4VA max @ 28V max
6A @ 125V AC
3A @ 250V AC
IR: 1G Ω min @ 500V DC
DS: 1.0kV AC
OTR: -10 ~ +55°C

EC: 10A @ 125V AC
6A @ 250V AC
10A @ 30V DC
IR: 200M Ω min @ 500kV DC
DS: 1.5kV AC
OTR: -30 ~ +70°C



Our commitment to excellence ensures each of our 3.5 million switch options are designed with superior quality. A reliable, tactile feel to each switch solidifies your experience – a switch you can trust. Explore the widest range of electromechanical switches in the industry with free online 3D CAD models, more than 500,000 product variations, and custom products for specific applications.

Pushbuttons

Series AB



EC: 0.4VA max @ 28V max
 IR: 500M Ω min @ 500V DC
 DS: 500V AC
 OTR: -30 ~ +85°C



Series BB



EC: 0.4VA max @ 28V max
 IR: 500M Ω min @ 500V DC
 DS: 500V AC
 OTR: -30 ~ +85°C



Series DB



EC: 0.4VA max @ 28V max
 IR: 1G Ω min @ 500V DC
 DS: 1.0kV AC
 OTR: -10 ~ +70°C



Series EB



EC: 0.4VA max @ 28V max
 3A 125V AC
 IR: 1G Ω min @ 500V DC
 DS: 1.0kV AC
 OTR: -10 ~ +70°C



Series FB



EC: 500mA @ 125V AC
 IR: 100M Ω min @ 500V DC
 DS: 1.0kV AC
 OTR: -10 ~ +70°C



Series GB



EC: 0.4VA max @ 28V max
 IR: 500M Ω min @ 500V DC
 DS: 500V AC
 OTR: -30 ~ +85°C



Series GB
 Illuminated



EC: 0.4VA max @ 28V max
 IR: 500M Ω min @ 500V DC
 DS: 500V AC
 OTR: -25 ~ +55°C



Series GB2



EC: 0.4VA max @ 28V max
 IR: 500M Ω min @ 500V DC
 DS: 500V AC
 OTR: -25 ~ +70°C



Series GP01 **SMT**



EC: 0.4VA max @ 28V max
 IR: 500M Ω min @ 500V DC
 DS: 500V AC
 OTR: -40 ~ +85°C



Pushbuttons

Series G3B **SMT**



EC: 0.4VA max 28V max
IR: 500M Ω min @ 500V DC
DS: 500V AC
OTR: -30 ~ +85°C



Series HB
Illuminated &
Nonilluminated



EC: 0.1A 30V AC/DC
IR: 100M Ω min @ 500V DC
DS: 500V AC
OTR: -25 ~ +50°C



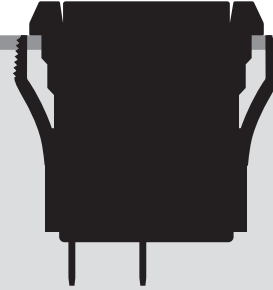
Series HB2
Illuminated



EC: 0.4VA max @ 28V max
IR: 500M Ω min @ 500V DC
DS: 500V AC
OTR: -25 ~ +50°C



Series JP



EC:
JPM: 10A @ 125V AC (TV-5)
JPL: 16A 125V AC (TV-8)
IR: 1G Ω min @ 500V DC
DS: 2.0kV AC
OTR: -10 ~ +70°C



Series KP
Illuminated



EC: 100mA max @ 12V DC
IR: 100M Ω min @ 250V DC
DS: 1.0kV AC
OTR: -25 ~ +50°C



Alternating Legends

Series MB2400



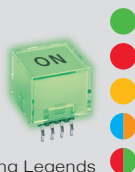
EC: 3A @ 125V AC
IR: 1G Ω min @ 500V DC
DS: 1.0kV AC
OTR: -30 ~ +85°C



Series NP01
Illuminated &
Nonilluminated

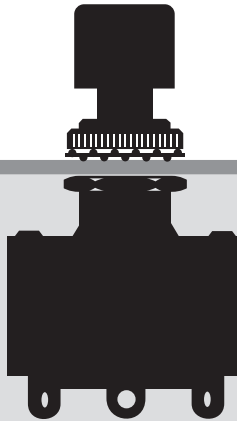


EC: 0.4VA max @ 28V max
IR: 500M Ω min @ 250V DC
DS: 250V AC min
OTR: -25 ~ +50°C



Alternating Legends

Series SB



EC: 3 ~ 10A @ 125V AC
1.5A ~ 5A @ 250V AC
IR: 200M ~ 1 G Ω min @ 500V DC
DS: 1.5 ~ 2.0kV AC
OTR: -10 ~ +70°C



Series SB4011



EC: 0.4VA max @ 28V max (gold)
3A @ 125V AC or
2A @ 250V AC (silver)
IR: 200M Ω min @ 500V DC
DS: 1.0kV AC min
OTR: -10 ~ +70°C



Series UB
Illuminated &
Nonilluminated

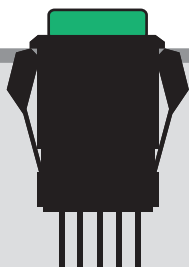


EC: 0.4VA max @ 28V max
5A @ 125V AC
5A @ 30V DC
IR: 200M Ω min @ 500V DC
DS: 1.0kV AC
OTR: -25 ~ +50°C

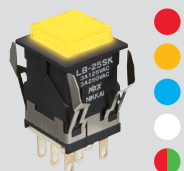


Alternating Legends

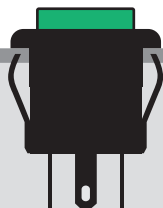
Series LB **IP65**
Illuminated &
Nonilluminated



EC: 0.4VA max @ 28V max
3A @ 125V AC
3A @ 30V DC
IR: 200M Ω min @ 500V DC
DS: 1.0kV AC
OTR: -25 ~ +50°C



Series LP01
Illuminated &
Nonilluminated



EC: 3A @ 125V AC
3A @ 30V DC
IR: 200M Ω min @ 500V DC
DS: 1.0kV AC
OTR: -10 ~ +50°C



Series M2B



EC: 0.4VA max @ 28V max
1A @ 125V AC
1A @ 30V DC
IR: 1G Ω min @ 500V DC
DS: 1.0kV AC
OTR: -30 ~ +85°C



Series MB2000 **IP67**
IP65



EC: 0.4VA max @ 28V max
6A @ 125V AC
3A @ 30V DC
IR: 1G Ω min @ 500V DC
DS: 1.0kV AC
OTR: -30 ~ +85°C



Series UB2
Illuminated &
Nonilluminated

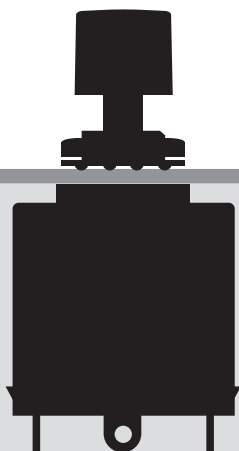


EC: 0.4VA max @ 28V max
5A @ 125V AC
5A @ 30V DC
IR: 200M Ω min @ 500V DC
DS: 1.0kV AC
OTR: -25 ~ +50°C



Alternating Legends

Series WB **IP67**
IP60



EC: 6A @ 125V AC
6A @ 30V DC
IR: 200M Ω min @ 500V DC
DS: 1.5kV AC
OTR: -30 ~ +70°C



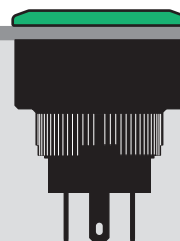
Series YB **IP65**
Illuminated &
Nonilluminated



EC: 0.4VA max @ 28V max
3A @ 125V/250V AC
3A @ 30V DC
IR: 200M Ω min @ 500V DC
DS: 1.0kV/1.5kV AC
OTR: -25 ~ +50°C



Series YB2 **IP65**
Illuminated &
Nonilluminated

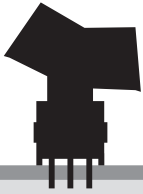


EC: 3A @ 125V/250V AC
3A @ 30V DC
0.4VA max @ 28V max
IR: 200M Ω min @ 500V DC
DS: 1.0kV/1.5kV AC
OTR: -25 ~ +50°C



Rockers

Series A



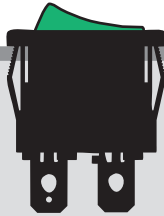
EC: 0.4VA max @ 28V max
IR: 500M Ω min @ 500V DC
DS: 500V AC
OTR: -30 ~ +85°C

Series CWSA



EC: 6A @ 250V AC
IR: 500M Ω min @ 500V DC
DS: 1.5kV AC
OTR: -10 ~ +70°C

Series CWSB
Illuminated



EC: 9A @ 125V AC
IR: 500M Ω min @ 500V DC
DS: 1.5kV AC
OTR: -20 ~ +85°C

Series G



EC: 0.4VA max 28V max
IR: 500M Ω min @ 500V DC
DS: 500V AC
OTR: -25 ~ +85°C

Series GW



EC: 0.4VA max @ 28V max
IR: 500M Ω min @ 500V DC
DS: 500V AC
OTR: -30 ~ +85°C

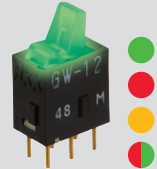
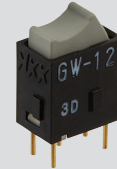
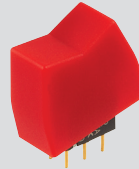
Series GW
Illuminated



EC: 0.4VA max @ 28V max
IR: 500M Ω min @ 500V DC
DS: 500V AC
OTR: -25 ~ +55°C



Neon Lamp

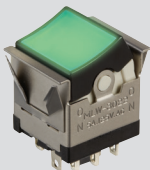


Tactiles

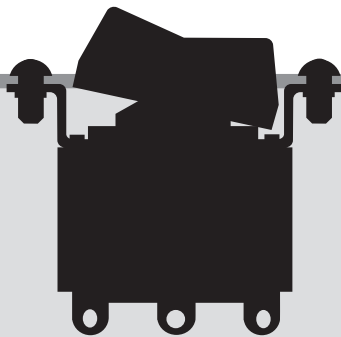
Series MLW
Illuminated &
Nonilluminated



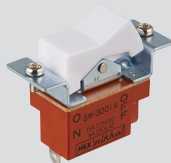
EC: 5A @ 125V
3A @ 30V DC
IR: 200M Ω min @ 500V DC
DS: 1.0kV AC
OTR: -10 ~ +50°C



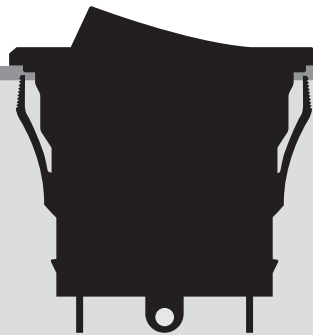
Series SW



EC: 15 ~ 30A @ 125V AC
15 ~ 30A @ 30V DC
IR: 1G Ω min @ 500V DC
DS: 2.0kV AC
OTR: -10 ~ +70°C



Series WR **IP67**



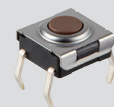
EC: 15A @ 125V AC
15A @ 30V DC
IR: 200M Ω min @ 500V DC
DS: 1.25kV AC
OTR: -25 ~ +85°C



Series CB



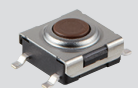
EC: 50mA 24V DC
IR: 100M Ω min @ 250V DC
DS: 250V AC
OTR: -25 ~ +70°C



Series CB3
SMT



EC: 50mA 24V DC
IR: 100M Ω min @ 250V DC
DS: 250V AC
OTR: -25 ~ +70°C



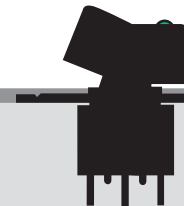
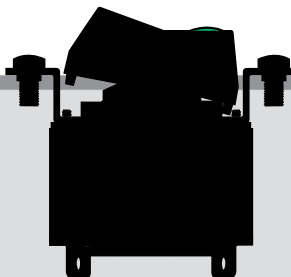
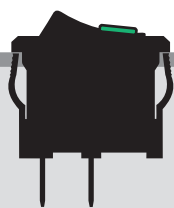
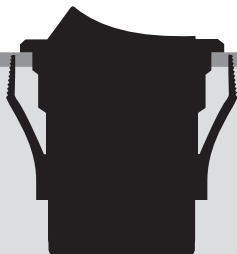
Series JW **IP67**

Series JWS
Illuminated &
Nonilluminated

Series LW
Illuminated
Neon Window

Series M

Series M2100
Illuminated



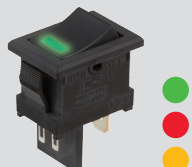
EC: JWM: 10A @ 125V AC (TV-5)
JWL: 16A @ 125V AC (TV-8)
IR: 1G Ω min @ 500V DC
DS: 2.0kV AC
OTR: -25 ~ +70°C

EC: 10A @ 125V AC
IR: 500M Ω min @ 500V DC
DS: 2.0kV AC
OTR: -25 ~ +50°C

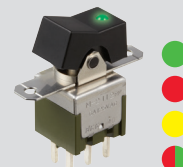
Resistive Load: 20A @ 110V AC
IR: 1000M Ω min @ 500V DC
DS: 2.0kV AC
OTR: -10 ~ +50°C

EC: 0.4VA max 28V max
6A @ 125V AC
3 ~ 4A @ 30V DC
IR: 1G Ω min @ 500V DC
DS: 1.0kV AC
OTR: -30 ~ +85°C

EC: 0.4VA max @ 28V max
6A @ 125V AC
3 ~ 4A @ 30V DC
IR: 1G Ω min @ 500V DC
DS: 1.0kV AC
OTR: -10 ~ +55°C



Window is translucent red



Series HP02

Series HP03
SMT

Series JB

Series JB
Illuminated

Series JF

Series JF
Illuminated

Series JL
Illuminated



EC: 0.4VA max @
28V AC/DC
3VA max @
28V DC
IR: 100M Ω min
@ 100V DC
DS: 250V AC
OTR: -20 ~ +70°C

EC: 0.4VA max @
28V AC/DC
3VA max @
28V DC
IR: 100M Ω min
@ 100V DC
DS: 250V AC
OTR: -20 ~ +70°C

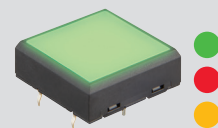
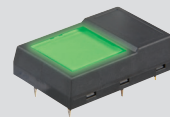
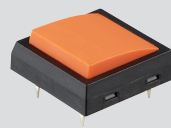
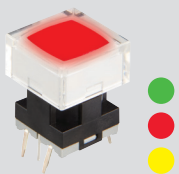
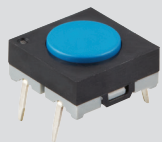
EC: 50mA @ 24V DC
IR: 500M Ω min
@ 250V DC
DS: 250V AC
OTR: -25 ~ +70°C

EC: 50mA 24V DC
IR: 500M Ω min @ 250V DC
DS: 250V AC
OTR: -25 ~ +70°C

EC: 50mA 24V DC
IR: 500 Ω min
@ 250V DC
DS: 250V AC
OTR: -25 ~ +85°C

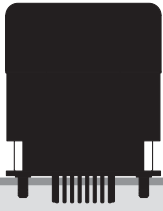
EC: 50mA @ 24V DC
IR: 500M Ω min @
250V DC
DS: 250V AC
OTR: -25 ~ +70°C

EC: 50mA @ 24V DC
IR: 500M Ω min @
250V DC
DS: 250V AC
OTR: -25 ~ +50°C



SMARTDISPLAY™ Programmable OLED & LCD

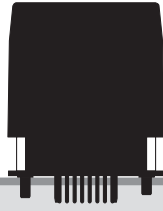
Series IS
Frameless OLED Pushbutton



96 RGB x 64 pixels
EC: 100mA @ 12V DC
IR: 100M Ω min @ 100V DC
DS: 125V AC
OTR: -20 ~ +70°C



Series IS
OLED Pushbutton



64 RGB x 48 pixels
EC: 100mA @ 12V DC
IR: 100M Ω min @ 100V DC
DS: 125V AC
OTR: -20 ~ +70°C



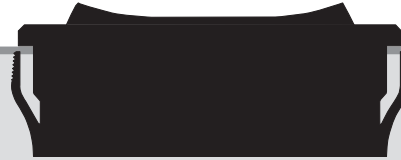
Series IS
OLED Display



52 RGB x 36 pixels
OTR: -20 ~ +70°C



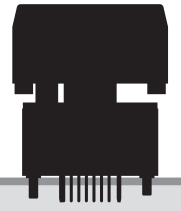
Series IS **IP64**
OLED Rocker



96 x 64 pixels
EC: 3VA max DC
IR: 500M Ω min @ 250V DC
DS: 250V AC
OTR: -20 ~ +70°C

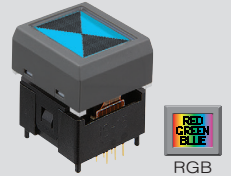


Series IS
LCD 64x32 Pushbutton

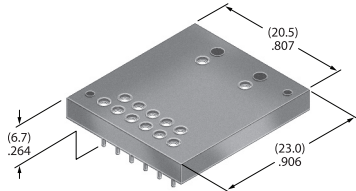


Standard Travel
1.8 mm (.071")

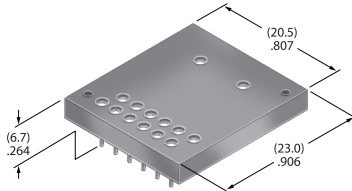
EC: 100mA @ 12V DC
IR: 100M Ω min @ 100V DC
DS: 125V AC
OTR: -15 ~ +50°C



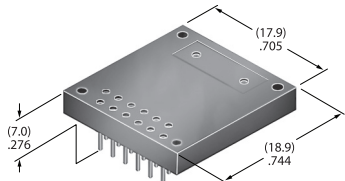
Sockets for Programmable OLED & LCD



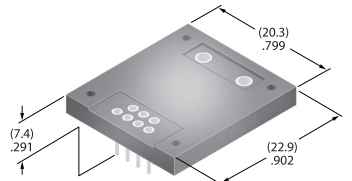
AT9704-02YC
Socket for LCD 36 x 24
Single & Bicolor Pushbutton
Base: Glass fiber reinforced PBT
Terminals: Brass / beryllium copper
Series: IS



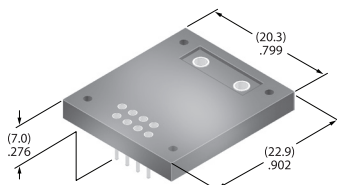
AT9704-065E
Socket for LCD 36 x 24
RGB Pushbutton
Base: Glass fiber reinforced PBT
Terminals: Brass / beryllium copper
Series: IS



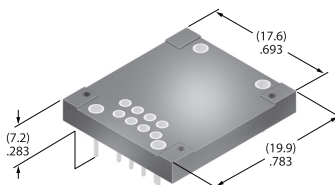
AT9704-065F
Socket for LCD 36 x 24
Compact Pushbutton
Base: Glass fiber reinforced PBT
Terminals: Brass / beryllium copper
Series: IS



AT9704-085K
Socket for LCD 64 x 32 Pushbutton
Base: Glass fiber reinforced PBT
Terminals: Brass / beryllium copper
Series: IS



AT9704-085L
Socket for OLED 64 x 48 Pushbutton
Base: Glass fiber reinforced PBT
Terminals: Brass / beryllium copper
Series: IS



AT9704-085M
Socket for OLED 52 x 36 Display
Base: Glass fiber reinforced PBT
Terminals: Brass / beryllium copper
Series: IS

Keylocks

Series CK



EC: 3A @ 250V AC
IR: 1G Ω min @ 500V DC
DS: 1.0kV AC
OTR: -25 ~ +70°C



Series SK



EC: 0.4VA max @ 28V max
3A @ 125V AC
IR: 1G Ω min @ 500V DC
DS: 500V AC
OTR: -25 ~ +70°C



Series IS
LCD 64x32 Pushbutton

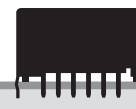
Series IS
LCD 64x32 Compact Pushbutton

Series IS
LCD 64x32 Display

Series IS
LCD 36x24 Pushbutton

Series IS
LCD 36x24 Compact Pushbutton

Series IS
LCD 36x24 Display



Long Travel
4.5 mm (.177")

EC: 100mA @ 12V DC
IR: 100M Ω min @ 100V DC
DS: 125V AC
OTR: -15 ~ +50°C

EC: 100mA @ 12V DC
IR: 100M Ω min @ 100V DC
DS: 125V AC
OTR: -15 ~ +50°C

OTR: -15 ~ +50°C

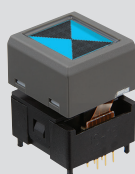
EC: 100mA @ 12V DC
IR: 100M Ω min @ 100V DC
DS: 125V AC
OTR: -20 ~ +60°C

EC: 100mA @ 12V DC
IR: 100M Ω min @ 100V DC
DS: 125V AC
OTR: -20 ~ +60°C

OTR: -20 ~ +60°C



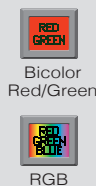
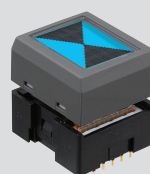
RGB



RGB

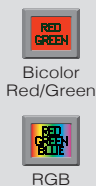
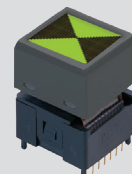


RGB



Bicolor
Red/Green

RGB



Bicolor
Red/Green

RGB



RGB

Tilt Switches

Series DS
A Type

Series DS
B Type



EC: 0.1A @ 12V DC
IR: 50M Ω min @ 250V DC
DS: 250V AC
OTR: -10 ~ +70°C

Photointerrupter Inside.
[Input] IF 50mA, VR 5V
[Output] Photo Transistor
VCEO 30V, VECCO 3V
OTR: -25 ~ +80°C



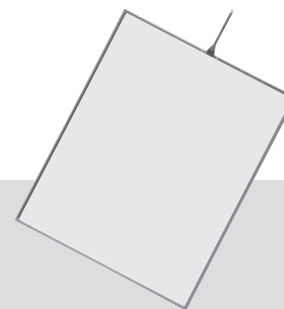
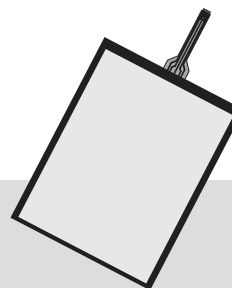
Membranes & Touch Screens

Series FM

Series FT

Series TP01

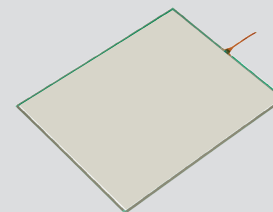
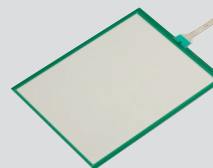
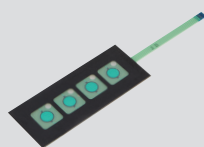
Not to scale



Power Level: 20mA @ 24V DC
IR: 100M Ω min @ 250V DC
DS: 250V AC
OTR: -15 ~ +50°C

Power Level: 1mA @ 5.5V DC
IR: 10M Ω min @ 25V DC
OTR: -20 ~ +70°C

Power Level: 1mA @ 5.5V DC
IR: 10M Ω min @ 25V DC
OTR: -20 ~ +70°C



Slides

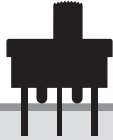
Series AS



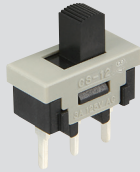
EC: 0.4VA max @ 28V max
IR: 500M Ω min @ 500V DC
DS: 500V AC
OTR: -30 ~ +85°C



Series CS



EC: 3A @ 125V AC
IR: 1G Ω min @ 500V DC
DS: 1.0kV AC
OTR: -30 ~ +85°C



Series FS



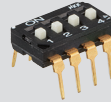
EC: 0.4VA max 28V max
IR: 500M Ω min @ 500V DC
DS: 500V AC
Insertion loss 0.5db @ 1GHz
Isolation 40db @ 1GHz
OTR: -30 ~ +85°C



Series JS01



EC: 25mA @ 24V DC
IR: 100M Ω min @ 500V DC
DS: 500V AC
OTR: -25 ~ +70°C



Series JS02 **SMT**



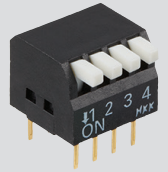
EC: 25mA @ 24V DC
IR: 100M Ω min @ 500V DC
DS: 500V AC
OTR: -25 ~ +70°C



Series JS03



EC: 25mA @ 24V DC
IR: 100M Ω min @ 500V DC
DS: 500V AC
OTR: -25 ~ +70°C

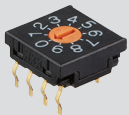


Rotaries

Series FR01



EC: 100mA @ 5V DC
IR: 1G Ω min @ 250V DC
DS: 250V AC
OTR: -25 ~ +85°C



Series FR02 **SMT**



EC: 100mA @ 5V DC
IR: 1G Ω min @ 250V DC
DS: 250V AC
OTR: -25 ~ +85°C



Series MR
Half-Inch Diameter
Process Sealed



EC For MRA: 250mA @ 125V AC
EC For MRF or MRK:
0.4VA max @ 28V
IR: 100M Ω min @ 500V DC
DS: 1.0kV AC
OTR: -10 ~ +70°C



Series MR
Power Level



EC For MRX: 2A @ 125V AC
EC For MRY106G: 0.4VA max @ 28V max
EC For Other MRY Models:
3A @ 125V AC
EC For MRT: 10A @ 125V AC
or 5A @ 125C AC
IR For MRX, MRY:
100M Ω min @ 500V DC
IR For MRT:
200M Ω min @ 500V DC
DS: 1.0kV AC
OTR: -10 ~ +70°C



Series JS04 **SMT**

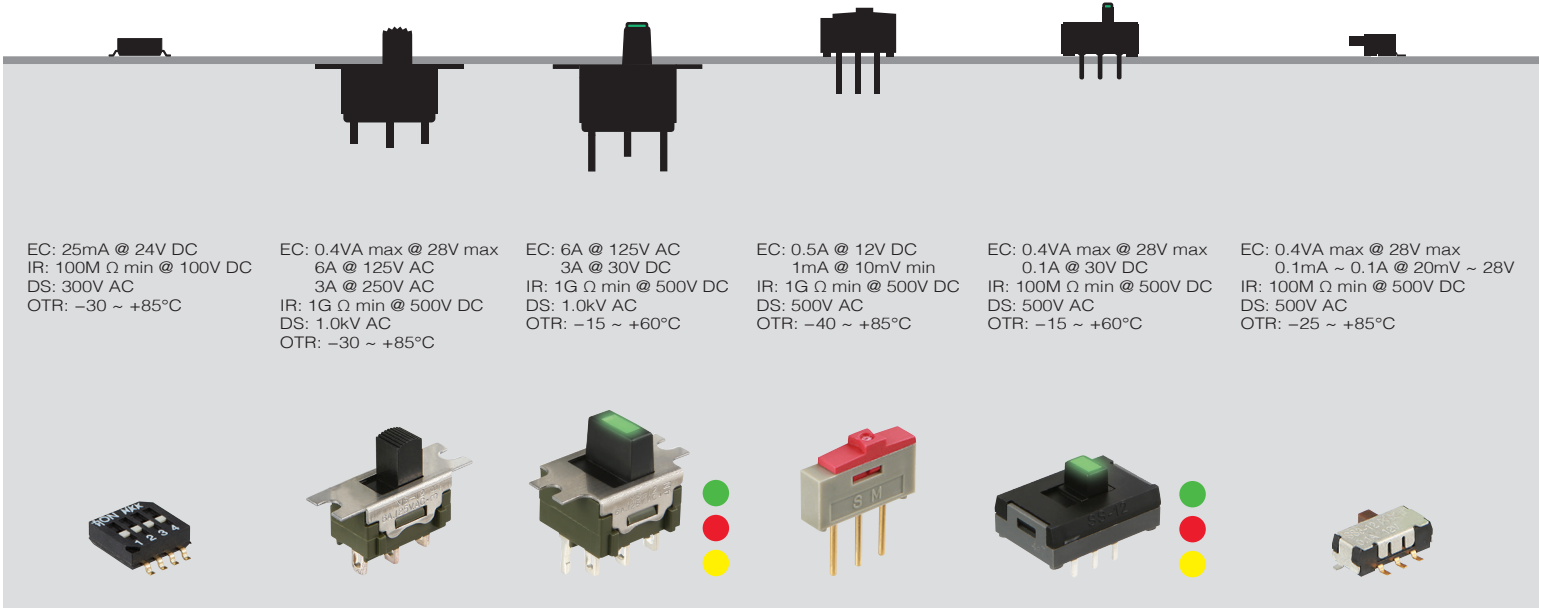
Series MS

Series MS
Illuminated

Series SM

Series SS
Illuminated &
Nonilluminated

Series SS3 **SMT**

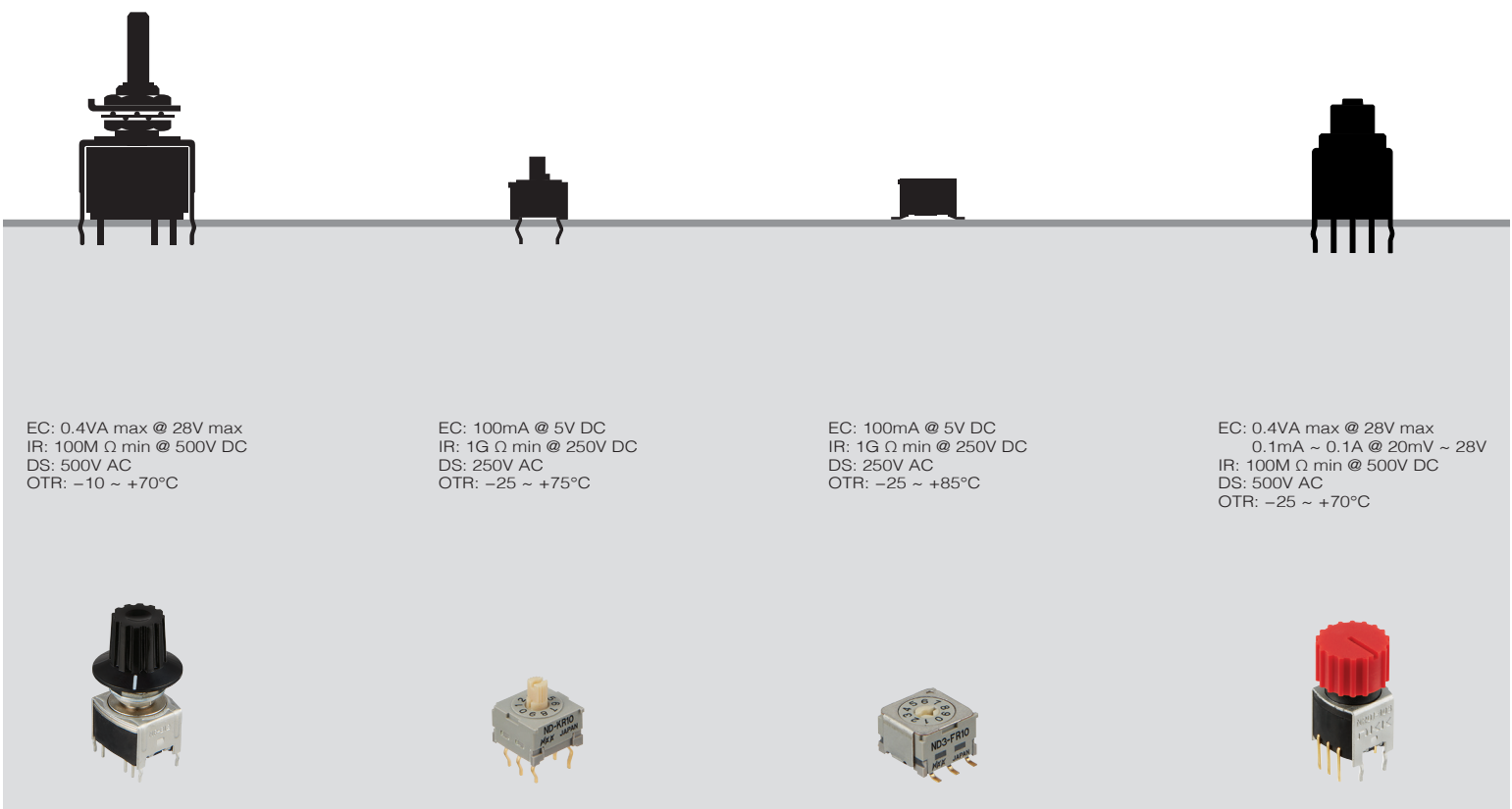


Series MRB

Series ND

Series ND3 **SMT**

Series NR01



Indicators

Series A



Series G



Series HB



Series LB

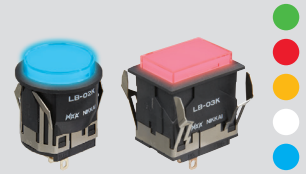


Complement to A switches
LED color: Red, Yellow, Green

Complement to G switches
LED color: Red, Yellow, Green

Complement to HB switches
Round / Square
LED color: Red, Amber, Green,
White, Blue

Complement to LB switches
Round / Square / Rectangular
LED color: Red, Amber, Green,
White, Blue



Series UB



Series UB2



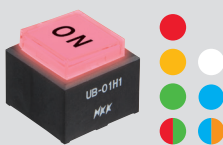
Series YB **IP65**



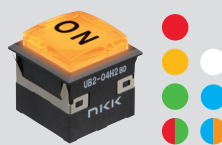
Complement to UB switches
Square / Rectangular
LED color: Red, Amber, Green,
White, Blue
Bicolor: Red / Green,
Amber / Blue

Complement to UB2 switches
Square
LED color: Red, Amber, Green,
White, Blue
Bicolor: Red / Green,
Amber / Blue

Complement to YB switches
Round / Square / Rectangular
LED color: Red, Amber, Green,
White, Blue
Bicolor: Red / Green



Alternating Legends

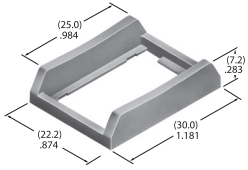


Alternating Legends

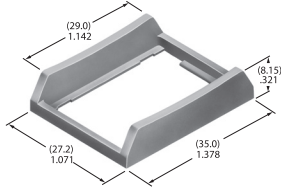


Accessories

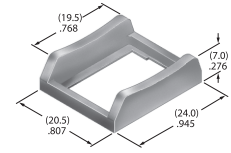
Barriers



AT217 Barrier
Polyamide
Colors: Black, White, Gray
Series: JWM

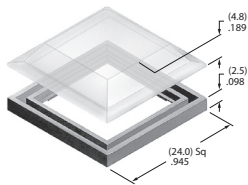


AT218 Barrier
Polyamide
Colors: Black, White, Gray
Series: JWL

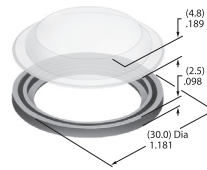


AT219 Barrier
Polyamide
Color: Black
Series: JWS

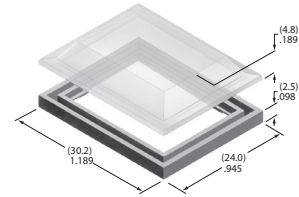
Dust Covers



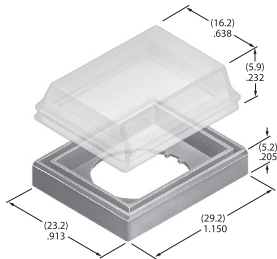
AT4001 Square Dust Cover
Lid: Polyvinyl chloride
Gasket: Polyethylene
Series: LB UB



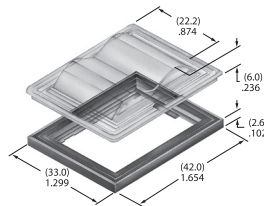
AT4002 Round Dust Cover
Lid: Polyvinyl chloride
Gasket: Polyethylene
Series: LB



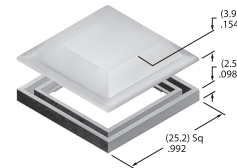
AT4011 Rectangular Dust Cover
Lid: Polyvinyl chloride
Gasket: Polyethylene
Series: LB UB



AT4115 Rectangular Dust Cover
Lid: Polyvinyl chloride
Base: Polyamide
Series: YB

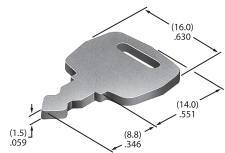


AT4126 Rectangular Dust Cover
Lid: Polyvinyl chloride
Base: Polyamide
Color: Black
Series: JWL

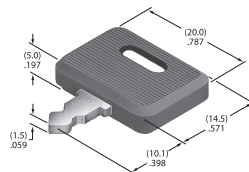


AT4145 Square Dust Cover
Lid: PVC
Gasket: Polyethylene
Series: UB2

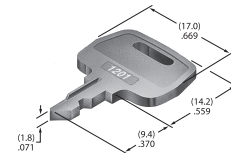
Keys



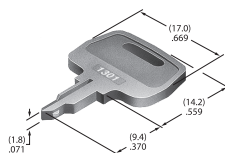
AT4079 Actuator Key
Brass alloy with bright nickel plating
Series: SK



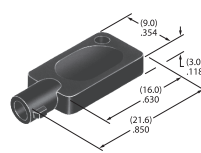
AT4080 Actuator Key
Brass alloy with bright nickel plating
Antistatic ABS resin handle
Color: Black
Series: SK



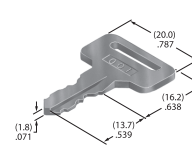
AT4081 Actuator Key
Zinc alloy with chrome plating
Series: SK



AT4082 Actuator Key
Zinc alloy with chrome plating
Series: SK



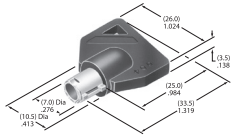
AT4094 Actuator Key
Polyacetal
Color: Black
Series: SK



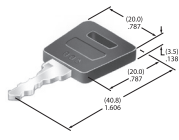
AT4124 Actuator Key
Brass with nickel plating
Series: SK

Accessories

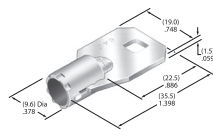
Keys



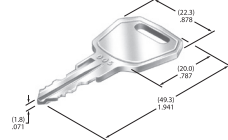
AT4146
Tubular Key
Brass with nickel plating
ABS handle
Color: Black
Series: CKM



AT4147
Flat Key
Brass with nickel plating
ABS handle
Color: Black
Series: CKM

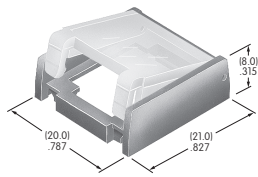


AT4152
Tubular Key
Brass with nickel plating
Series: CKL

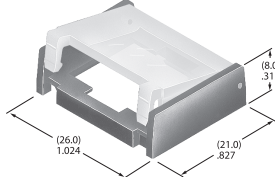


AT4153
Flat Key
Brass with chrome plating
Series: CKL

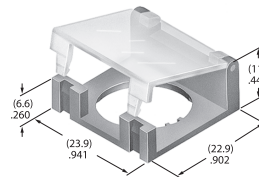
Protective Guards



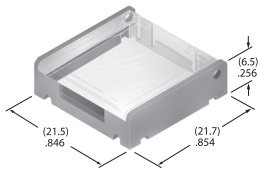
AT499
Protective Guard
for Square
Cover: Polycarbonate
Base: Polyamide
Series: LB



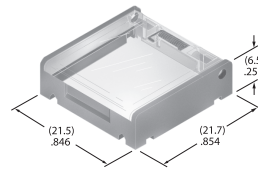
AT4057
Protective Guard
Polycarbonate
Series: LB



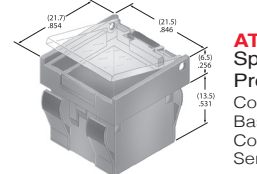
AT4072
Protective Guard
Lid: Polycarbonate
Base: Glass fiber reinforced polycarbonate
Series: YB



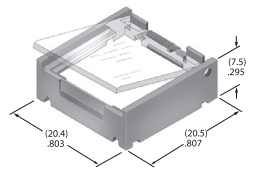
AT4141
Protective Guard
Cover: Polycarbonate
Base: GFR polyamide
Series: UB2



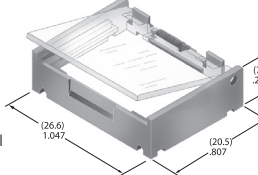
AT4142
Spring Loaded
Protective Guard
Cover: Polycarbonate
Base: GFR polyamide
Coil spring: Stainless steel
Series: UB2



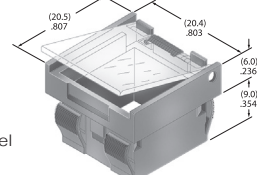
AT4170
Spring Loaded
Protective Guard
Cover: Polycarbonate
Base: Polyamide
Coil spring: Stainless steel
Series: UB2



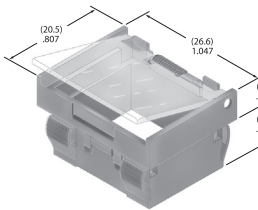
AT4171
Spring Loaded
Protective Guard
Cover: Polycarbonate
Base: Polyamide
Coil spring: Stainless steel
Series: LB UB



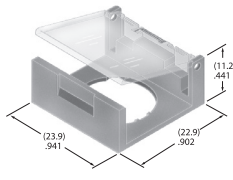
AT4172
Spring Loaded
Protective Guard
Cover: Polycarbonate
Base: Polyamide
Coil spring: Stainless steel
Series: LB UB



AT4173
Spring Loaded
Protective Guard
Cover: Polycarbonate
Base: Polyamide
Coil spring: Stainless steel
Series: UB

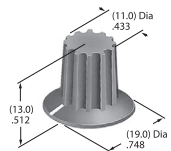


AT4174
Spring Loaded
Protective Guard
Cover: Polycarbonate
Base: Polyamide
Coil spring: Stainless steel
Series: UB

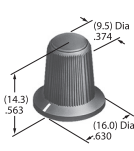


AT4175
Spring Loaded
Protective Guard
Cover: Polycarbonate
Base: Glass fiber reinforced polyamide
Coil spring: Stainless steel
Series: YB

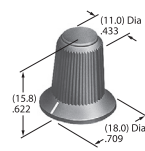
Rotary Knobs



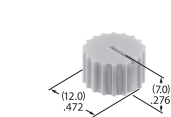
AT433
Knob for Miniature Rotaries
Polyacetal
Color: Black
Series: FR01 MR



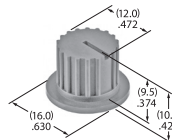
AT4103
Small Color Tipped Knob
Polyester with polyamide tip
Base Color: Black
Tip Colors: Black, White, Red, Yellow, Green, Blue, Gray
Series: FR01 MR



AT4104
Large Color Tipped Knob
Polyester with polyamide tip
Base Color: Black
Tip Colors: Black, White, Red, Yellow, Green, Blue, Gray
Series: FR01 MR



AT3008
Knob Without Flange
Glass fiber reinforced polyamide
Colors: Black, Red, Gray
Series: NR01



AT3009
Knob With Flange
Glass fiber reinforced polyamide
Colors: Black, Red, Gray
Series: NR01

Available Worldwide

Over 65 Years of Engineering and Manufacturing Excellence



Broadcast



Medical



Industrial Automation



Construction



Transportation

NKK SWITCHES CO., LTD.

NKK Switches of America, Inc.

7850 East Gelding Drive, Scottsdale, AZ 85260
Tel: 877-2-BUY-NKK or 480-991-0942 / Fax: 480-998-1435
www.nkkswitches.com E-mail: customerservice@nkkswitches.com

Corporate Headquarters:

715-1, Unane, Takatsu-ku, Kawasaki-shi, 213-8553 Japan
Tel: +81 44-813-8001 / Fax: +81 44 813 8031
www.nkkswitches.co.jp E-mail: nkkswitches@nkkswitches.co.jp

International

Europe: NKK SWITCHES CO., LTD. (Frankfurt, Germany)

China: NKK SWITCHES CHINA CO., LTD. (Shanghai, PR China)

Asia: NKK SWITCHES HONG KONG CO., LTD. (Hong Kong, PR China)